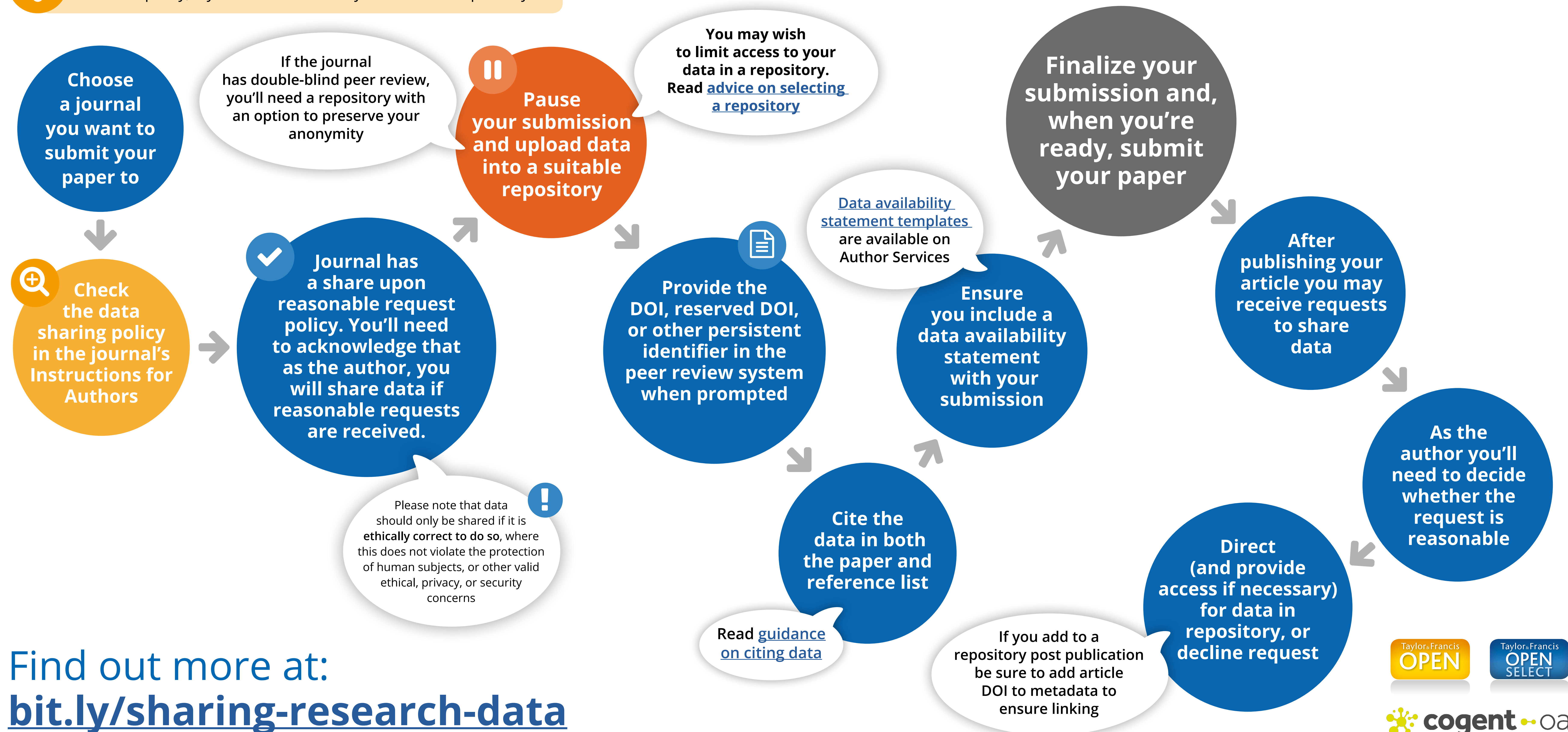


Data sharing: understanding our share upon reasonable request policy

- ✓ Submitting your article to a Taylor & Francis, Routledge or Cogent OA journal
- ✓ A data set is associated with your paper



The example below shows the steps you may follow for journals with this policy, if you choose to share your data in a repository.



Find out more at:
bit.ly/sharing-research-data

